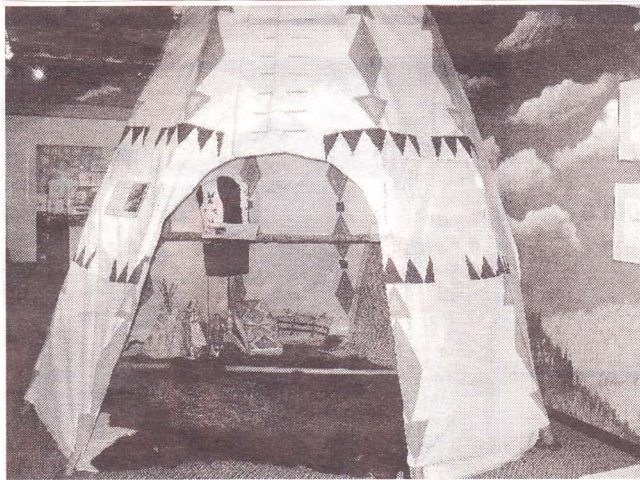


# Daily Herald

Friday, July 30, 2010

PADDOCK PUBLICATIONS



## Native American art

The new "Dazzling Colors: The Evolution of Plains Reservation Art" exhibit at the Mitchell Museum of the American Indian focuses on art and culture. Learn about tribes of the northern Great Plains during the period of forced removal from ancestral lands and the Reservation Period of the 1880s to the 1930s. See how traditional art is kept alive today on Plains reservations. Fifty historic objects are featured, including pictorial beadwork, painted hide bags, dolls and quillwork. Guests can walk into a canvas replica of a tepee to view some exhibit items.

**Runs through Sunday, Oct. 17, at the Mitchell Museum of the American Indian, 3001 Central St., Evanston. Hours are 10 a.m. to 5 p.m. Tuesdays and Wednesdays; 10 a.m. to 8 p.m. Thursdays; 10 a.m. to 5 p.m. Fridays and Saturdays; and noon to 4 p.m. Sundays. Closed on Mondays. Admission is \$5 for adults; \$2.50 for seniors, students and children. Maximum admission per family is \$10. Admission is free on the first Friday of each month. Free admission through Sept. 6 for active members of the U.S. military and their immediate families. (847) 475-1030 or [mitchellmuseum.org](http://mitchellmuseum.org).**